



wwett
BOOTH 6004
Feb 2016

*May
all of
Your
Wishes
come true.*

GapVax®

CUSTOM-BUILT INDUSTRIAL VACUUM EQUIPMENT

Stop by our website to see all of the equipment we have for sale.

www.gapvax.com



2015 PETE

AIR MOVER WET/DRY:
17 CU YD DEBRIS BODY; 5,250 CFM,
28" Hg; SLUDGE PUMP & MORE



COMBO JETVAC

WET-ONLY; 2014 WESTERN
STAR; 1,500 GALLON STAINLESS
STEEL WATER TANK; 10 CU YD
DEBRIS BODY; TRASH PUMP & MORE!

281-884-8658

DEER PARK, TX

888-442-7829

JOHNSTOWN, PA

 **PARTSEXPRESS**



classifieds

see photos in color at www.pumper.com

ADVERTISING

SANITATION REMINDER POSTCARDS, BUSINESS CARDS AND CUSTOM COLOR DECALS: We are your resource for marketing your business. Call 781-844-8600 or visit us and see samples at www.sanitationpostcards.com (PBM)

AERATORS

Blue Diamond ETP 80 heavy-duty linear diaphragm air pumps \$225. 800-717-8807 www.whitesepctic.org (PBM)

Aerators: Multiflo alternative replacement \$325 + shipping. Alternative replacement, NEW FILTER SOCKS, 30 per case \$370 + shipping. Spring clips to hold filter socks in place, \$3.86 per clip. **Alternative Jet Aerator** available \$425. Call us at 800-717-8807 or email us at fabulousfungi@gmail.com. www.whitesepctic.org. Multi-Flo® and NAY-ADIC® are registered trademarks of Consolidated Treatment Systems, Inc. used here for reference purposes only. (PBM)

BACTERIA/CHEMICALS-SEPTIC



Your name or service on the label! We print it in color! We make it look good! 12 boxes to a case.

800-717-8807 (PBM)

BLOWERS



Roots 827PD Blower: Less than 20 hours of use. Blower came off a 2015 Vac-Con combination sewer cleaning truck. \$13,000

Call Fredrickson Supply
616-949-2385, MI (P01)

BUSINESSES

Septic Tank Service Business for Sale, Northeast Florida. Owner wishes to retire. Callahan area north of Jacksonville, a fast-growing area in Florida. Profitable, turnkey business. 30 years in business with loyal customer base. Two pump truck operation: (1) 1996 International 4900: DT466, 5-speed transmission, 2-speed axle. 2,500-gallon capacity. 297,000 miles. Good tires, excellent condition. (2) 2000 Freightliner FL70: 8.3 Cummins, 6-speed transmission. 2,400-gallon capacity. 195,000 miles. Good tires, excellent condition. Business includes complete onsite lime 20,000-gallon stabilization plant in Northeast FL. Owner will train and assist with licensing. Call for more information. Kenny Farmer 904-879-4701 or 904-545-0357. (P12)

ARE YOU MOVING TO FLORIDA? Would you like to start a septic and sewer cleaning business? I have license - will sponsor. For more information call Larry at 931-248-1284 or 931-287-5413. (PBM)

Well-established SW Florida portable restroom business for sale. 800+ units on the street, 15 ADA, 30+ sinks, 20+ holding tanks, 6 trucks, 2 trailers. Many long-term construction customers. Year-round event customers. Documented yearly growth. Only serious buyers need to inquire. portapottyrentals@yahoo.com (P01)

Portable toilet company - established for over 20 years in the central KY area - for sale. Approximately 350 portable toilets, (1) 12-position transport trailer, (1) 6-position trailer, 2 portable toilet trucks, (1) 2009 Peterbilt 1,100/400 with 118,000 miles, (1) 2005 International 900/300 with 200,000 miles, holding tanks, and handwash units. Strong customer base including contractor, special events and weekend service. Will sell business with or without pump trucks. ccportables@bbtel.com (P12)

Northeast Arizona. Elk & mule deer hunting. Septic pumping business for sale - \$265,000. House and 1.3 acres available - \$119,000. Turnkey and established over 29 years. Owner retiring. Call 401-741-5501. (P12)

National Grease Recycling Inc. Let us teach you how to recycle restaurant's waste, fryer grease and oil (yellow grease) only. Big \$. Over 30 years experience, will guide you through complete process from collection to processing to marketing to end users. Don't lose your trap business to competitors that offer both services. We also buy cooking oil, unprocessed, anywhere in the country. Call for information. References available - many success stories. Dewey Walker, 813-704-6599 or 813-758-2552. (PBM)

West Chicago, IL septic service business for sale. Family-owned for over 50 years. 630-629-1000 (P12)

Well-established (1966) septic tank pumping business in Minneapolis, MN, south Metro counties for sale. Second owner retiring after 23 years. 2003 Mack Granite, 400hp Allison, 3,500-gallon aluminum Jay's tank, 866 NVE pump, built on new truck in 2003. 1990 Mack CH, single axle, 250hp, 5-speed, 2,500-gallon aluminum Jay's tank, 360 NVE pump, built 1999. 2,500 customer database. \$120,000. Call Greg at 952-469-2489. ggudbjartsson@gmail.com (P12)

PARADISE FOR SALE! Bee's Honey Pots, Inc., portable toilet company established in 1983 in the beautiful Florida Keys is for sale. Based on Big Pine Key, Bee's is the oldest established and largest portable toilet company in the Keys. Sole owner and operator for the past 30+ years wants to go fishing! Interested? Call 305-872-2287. (P12)

Septic tank cleaning & inspection service business for sale in Central Maine. Owner is branching out after 20 years and wants to sell this part of the business. Profitable, turnkey business with a loyal customer base. Two pump-truck operation (1) 2000 GMC - 2,500-gallon capacity, 136,000 miles. (2) 2004 Peterbilt - 4,500-gallon capacity, 129,000 miles. Serious inquiries only! \$257,000. Call 207-782-1620 or email septicbizsale@gmail.com (PBM)

For Sale: Northeast Ohio portable restroom company. Company consists of approximately 800 portable restrooms with 42 handicapped-accessible units, 16 handwash stations, 5 shower units, 2 delivery trucks, 4 service trucks and 3 delivery trailers. This is a 12-year-old company with many long-term customers and documented yearly growth. Owner is retiring. For serious inquiries please contact Rich at 440-223-4877. (P02)

Fully-equipped Long Island, NY cesspool cleaning company for sale. Established 50+ years serving Nassau & Suffolk Counties with excellent reputation and high-repeat customer base. 516-993-0446 (P01)

www.RooterMan.com. Franchises available with low flat fee. New concept. Visit website or call **1-800-700-8062.** (PBM)

COMPUTER SOFTWARE

FreeServiceReminderSoftware.com, FreeServiceDispatchSoftware.com, FreeRouteManagementSoftware.com. (P12)

DEWATERING



Rotary Fan Press Mobile Unit. Size 36 dual channel. Hydraulic capacity: 70gpm. Solids loading capacity: 1,050 d.s. lbs/hr. Polymer blend/feed system. Conveyor. Control panel w/touch screen. Fully loaded. GREAT SHAPE. \$250,000

616-516-1451, MI (P12)

Portable septic and grease receiving stations, dual-screen design. Screens that really work - simple, non-mechanical. Set it up anywhere. 208-790-8770 screencosystems.com sales@screencosystems.com (PBM)

DRAIN/SEWER CLEANING EQUIPMENT



2004 Camel 1200 PD combo truck; 5,000 hrs., 32,000 miles. Runs & works. Municipal unit. Good condition. Call Earl for price.

503-704-2151, WA (C12)

2014 Spartan Sparvision200 drain camera with locator. You would need iPad. Over \$8,000 invested. Will sell for \$4,500. 402-510-0218 (C12)

2009 Spartan 799 water jet with two controls. 18gpm with 4,000psi. 1,235 hours. 500 feet of 1/2" hose. Asking \$13,000. Call Jeff 815-228-9845. (C12)

Used and rebuilt cable machines in stock: RIDGID K-7500, K-40, K-60, K-1500, Spartan #1064, #300, #100, Electric Eel model #C machines. The Cable Center: 800-257-7209. (CBM)

DRAINFIELD RESTORATION

New and used terralifts for sale starting at \$20,000 used and \$38,000 new. Financing available. Call John at AerraTech 413-298-4272. (PBM)

HAZARDOUS WASTE UNITS



2007 Freightliner with Presvac 3,200-gallon DOT-certified stainless steel dump door with Demag 200 750cfm 27" vacuum pump. 46k rear, 18k front. 80,000 miles. Excellent condition.

KLM Companies
617-909-9044

PBM

New 3,200 U.S. gallon, carbon steel, DOT certified, 407/412 vacuum tank, dump type with full open rear door and a Presvac PVB 750 vacuum-pressure pump installed on a 2015 Peterbilt 348 cab and chassis. (Stock #13634 A-D) www.VacuumSalesInc.com, (888) VAC-UNIT (822-8648) (PBM)

2015 Presvac/Freightliner: DOT certified 3,200-gallon polished stainless steel. Full dump/door vacuum truck with Moro PM100 vacuum pump. Automatic, Cummins power. 46k rear, 20k front. Must see! KLM Companies 617-909-9044 (PBM)

Pioneer 5,500 U.S. gallon, carbon steel trailer with pump package. (Stock# 0220C) www.VacuumSalesInc.com (888) VAC-UNIT (822-8648) (PBM)

HYDROEXCAVATING EQUIPMENT



2007 Volvo VHD64B w/X-Vac X-12 body. Great used dealer-serviced and work-ready truck. 12-yard debris tank. Hibon 27" blower. 1,000 gallons water w/20gpm General pump @ 4,000psi. 750K Hotsey boiler. \$110,000

Jason 303-301-7684, CO
jmitchell@transleaseinc.com P12

INSURANCE

Paying too much? Slow certificates? Claim problems? Rates keep going up? Want a fresh start? We can help: **Call 800-454-1970** (PBM)

JETTERS-TRAILER



Xtreme Flow Trailer Jetter Hot/Cold! Model# HJ2TA8536, tandem axle trailer, 35 hp Vanguard 10 gpm @ 3,850 psi, 325-gallon water tank, 300' hose, General Pump. List \$36,995. On sale for \$32,995. Fully loaded!

800-213-3272
www.hotjetusa.com CBM



2011 Harben Jetter: 4,000psi @ 18gpm. 500' hose. 3 standard jet tips. Jet hours used 226. Great unit. \$19,900

Call Karen 440-324-2380, OH C12



2004 NLB 225F 20,000psi jetter and rotating lance. 260hp Cummins, 508.9 hours total. 200 ft. 20k jetting hose, four (4) StoneAge rotating nozzles, one (1) NLB Line Mole penetrating nozzle, one (1) 20k lance with rotating nozzle. \$43,000 for entire package.

charlie@techtronenvironmental.com

WANTED: Used Harben trailer jetter. Working condition. 724-420-7770 (C12)

2000 John Bean Trailer Jet: 35gpm @ 2,000psi. 400-gallon tank, 400' new hose. \$11,000 OBO. 231-325-0052 or 734-365-4035. (CBM)

2006 SRECO trailer jetter, one owner. 700-gallon water tank capacity, 98hp Kubota diesel - less than 800 hours on engine. New Udor 4,000psi @ 18gpm pump. New paint, new gauges. I've made this jetter same as brand-new for the new owner. \$30,500. 765-744-8789 Indiana. (C12)

2014 Spartan Soldier jetter. \$23,000 invested with accessories. 25 hours total use. \$16,500. Also have Sparvision 200 camera - \$5,000. 402-510-0218 (C12)

2012 US Jetting Trailer 6018: 6,000psi @ 18gpm. Kubota diesel, extra reel, dump guns, nozzles, etc. Only 333 hrs. MUST SEE! 604-886-1212 or sstarbuck@dccnet.com (P01)

JETTERS-TRUCK



1993 GMC 1-ton Jetter: 35gpm FMC pump, 3/4" hose, 500-gallon plastic tank. Excellent cold-weather machine. \$11,900 OBO
Other jet trucks and trailers available.

608-835-7767, WI CBM

Jack Doheny Supplies Inc. offers a full range of late model combo units and DOT industrial vacuum loaders. Call us @1-800-3DOHENY. (CBM)

JET VACS



2006 International Vac-Con: 80gpm, 3-stage fan, 12-yd. debris tank, 96,923 miles, 11,063 hrs. Pony motor 2,351 hrs. \$115,000

Call 877-389-2227, IN C02



2003 Vac-Con, 3-stage fan, 80gpm/2,000psi water pump, telescopic boom, 1,300-gallon water capacity, 11-yd. debris tank. 2004 IH chassis, 275hp diesel engine (pre-emission), Allison auto. transmission, 34,258 miles. Ex-city unit.

Call 800-294-0149, CO
www.williamseqpt.com C12



1999 Clean Earth Safe Jet Vac: Sterling chassis, 20,000# front axle/40,000# rear, tandem. Allison automatic transmission, Caterpillar engine engine hours: 12,197; miles: 63,044. 12-cubic-yard hot-dip galvanized debris hopper, 1,300-gallon water tank capacity. Meyers 80gpm, 2,000psi water pump. Roots 824 15" blower. New Cyclone separator. Rebuilt transfer case output, nosecone fuel tank was coated, new Kevlar poly-drive chain for blower. Complete service including chassis, new tires (not pictured). In 2014 this unit was at our shop and had the following parts replaced: debris body inlet tube, debris body outlet cone, inner and outer boom tubes and seals, Meyers water regulator. This is an ex-municipal unit with lots of life left in it and it ready to work!..... \$65,000

Visit www.brownequipment.net
for more pictures and info.
Call Brown Equipment at
800-747-2312 C12



2005 Vac-Con VPD4211LHA/1300 on International 7400 with DT466 engine, Allison auto transmission, 87,300 miles. Deutz 138hp rear engine, long telescopic boom, hydrostatic drive, articulating 600' x 1" hose reel. 1,300-gallon water tanks, 11-yard debris tank, 80gpm @ 2,000psi and Roots 827PD blower. \$80,000 OBO

Mark 708-475-7100, IL CBM



Used PD Blower: Roots 821 PD Blower w/transfer case and two (2) aluminum water tanks. \$8,750

814-696-4343 C12



Pressure Washers, Replacement Engines, Pumps, Parts & Accessories

FLASH SALE

FREE DELIVERY
On Sale Priced Items

NOZZLES

QC 4 PACK



~~\$9.99~~
\$9.49

ADJUSTABLE TURBO



~~\$59.99~~
\$51.99

ROTATING 4K



~~\$29.99~~
\$29.99

UP TO 20 GPM



~~\$129.99~~
\$115.99

REPLACEMENTS

TRIGGER 4K



~~\$14.99~~
\$13.49

TRIGGER 5K



\$24.99

RECOIL



~~\$15.99~~
\$9.93
10+

26.4GPM@1800PSI



\$1,499

ACCESSORIES

JETTER KIT



\$49.99

HYDROEXCAVATION WANDS



ALL SIZES AND FLOWS

SURFACE CLEANER



~~\$299~~
\$285

ROLL CAGE FRAMES



\$169.99

WASHERS

HONDA 4200 PSI JETTER



Base Model
\$1,099

\$1,399

5000 PSI & REEL



~~\$4,985~~
\$4,449

HOT WATER



~~\$3,899~~
\$3,665

DIESEL HOT WATER



\$300
P/M

7gpm @ 4000psi

WaterCannon.com

30
YEARS OF
SERVICE

1.800.333.WASH (9274)



Industry Trained Staff available from 8:30 a.m. to 7:00 p.m. weekdays E.S.T.

Water Cannon, Un contacto en Espanol: llama al: 1.800.917.9274

Orlando | Phoenix | Minneapolis | Hattiesburg | Melbourne | Toronto | Bogota
International: 1-321-800-5763

Water Cannon
is proud to be a
MWBE



CALL TODAY FOR SAVINGS

Professionals in the Vacuum Tank & Trailer Industry

Contact: Jerry Blake, Toll Free: **866-720-4999**

or: Amanda: **401-339-9992**

TANK SERVICES, INC



P.O. Box 8136, Cranston, RI 02920

jerry@tankservicesinc.com

Cell: 401-688-0043

Web site: www.tankservicesinc.com

Amanda Hensarling

Baytown, TX

amanda@tankservicesinc.com

Cell: 401-339-9992

Thank you to our customers. Have a Merry Christmas and Happy New Year



7000-9000 Trailers In Stock

8000 & 9000 Gallon Aluminum Tri-Axle Trailers.
Air ride suspension (tri-axle), pump platform, bright finish, LED lights, Betts valves, **IN STOCK**



International or Peterbilt
950 gallon aluminum, carrier rack **IN STOCK**



Self Contained Unit
600 gallon steel tank, 33.5 HP Kubota diesel engine (choice of pumps), 200 gallon poly tank, 6 gpm 3,000 psi jetter.



Slide-In Units
500-1,000 gallons, 1 or 2 compartment; select a pump package & engine HP. Standard units **"Always in Stock"** all light weight aluminum, many available options.



(2) 5,000 gallon aluminum tanks IN STOCK ready to mount out chassis or ours.



2013 Dodge 5500 aluminum 1,300-gallon (1,000 waste/300 fresh) restroom tank, Masport HXL4 pump, deisel, pressure system and hose reel, DC10 water pump, excellent condition



2016 PETERBILT 337
300 HP, Allison auto, NVE 607 Pak, 2800 gal. alum tank. **IN STOCK**



2016 567 Peterbilt
10-speed, 485 HP, tri-axle, aluminum wheels, 5,000 gallon tank, NVE 866 "Max" package liquid cooled, all air, loaded



Restroom Tanks
Stainless steel and Aluminum available in various sizes and compartments. **IN STOCK**



NVE Pumps For Sale
NEW ENGLAND DISTRIBUTOR
NVE 866 and 4307 Packages Available



Need Equipment? Contact Us We Can Get It. 866.720.4999

JET VACS



2005 Vac-Con jet vac, CAT engine, auto, rebuilt FMC 65gpm/3,000psi pump, hydro excavation, 3-stage fan. \$60,000 OBO

Call 317-773-7996, IN C12



2007 Vac-Con: Powerful Hibon PD blower, Sterling 2007 chassis model LT9501. 350hp, Allison automatic transmission, 10' x 8" aluminum telescoping boom with pendant control station, wireless remote control. 1,300-gallon water tank, Deutz aux. engine - 4,600 hours. 12-cubic-yard debris tank, winter recirculating system. Hydroexcavating package, hydraulic pipe rack (holds 3 pipes - curb side). Gone through and serviced by Vac-Con dealer. Equipment in good condition. 22,050 miles. \$130,000

Call Fredrickson Supply
616-949-2385, MI C12

Refurbished 2000 AQUATECH B10, 10-yr. body, rebuilt 65gpm/2,000psi pump, GMC chassis, 95k miles. Auto. transmission. Excite unit. Full rebuild sheet available. Call 856-599-4838 www.internationalinkllc.com (C02)



2006 Vac-Con jet vac combo: On Peterbilt CAT C7 engine, Roots 824PD blower, Allison automatic. 600 ft. 1" hose, 2,000psi @ 80gpm, 1,300-gallon water tanks, 12-yr. debris tank. Debris body flush system, High-dump debris body. 732 hrs. on aux. engine. 8" telescoping boom. Truck engine rebuilt with in last 2 years and has warranty on it through CAT. Excellent condition. \$120,000 OBO

Call Kyle 515-360-8582, IA
kyle@accujetiowa.com C12

1991 Volvo Camel 200: Tandem axle. Great condition. Ready for work. \$25,000. Green Bay, WI. 920-655-7302 or 920-866-9109. (CBM)

2008 Camel Combo: 73,000 miles, 6,700 hrs. 80gpm, 2,000psi. PD blower. Refurbished at authorized Super Products dealer. In-frame engine rebuild less than 4,000 miles. \$130,000. Call Bill 813-489-3108 (C02)



2003 Super Products Combo Camel truck with a Sterling cab with manual transmission. The truck has 110,000 miles. Truck has a 16" PD blower on it. Truck runs, drives and operates great. Tires are in good condition. No accidents or issues. Truck is located in Chicago IL. \$66,000

Mark 773-491-6093, IL P12



2001 Peterbilt Vector 2100: C-10 CAT, push-button Allison. 80gpm @ 2,000psi. 61,000 municipal miles. Exceptionally clean unit. Ready to work. Delivery available. CHAMBERS MOTOR CO., Boring, Oregon \$109,500

Call John 503-887-0070 PBM

SUBMIT YOUR CLASSIFIED ONLINE AT www.pumper.com

JET VACS

2000 Vactor 2110 on Sterling chassis with CAT diesel, Allison automatic. 106,000 miles, 6,600 hours. Municipal-owned and maintained. 15" Roots blower, 1,000-gallon water capacity, 10-yard debris body, 60gpm at 2,500psi pump. \$75,000 OBO. Call Brian 303-898-9475 (C12)

2007 Vactor 2103: Unit has been completely refurbished - only 38,500 miles. City-owned Sterling Acterra 33k GVWR chassis. Call 281-770-6714 Houston Metro. Pics available - Must see! (C01)

2002 Sterling LT7501 Vac-Con Model V390LHA combination sewer cleaning truck: Freshly painted white. CAT 3126 - 275hp engine, 3-stage fan, 1,000-gallon water tanks, pump off option available. 10' telescopic boom. FMC water pump - 65gpm @ 3,000psi. Articulating hose reel with 600 feet of new 1" hose. 84,316 miles. Located in Orange, CA. \$79,900. Contact Craig: 714-639-8352. Additional details at www.empireequip.com (CBM)

Ford L85 Vactor jet truck: New motor, 53,293 miles, 80 gpm, 1,000-gallon capacity. Good, clean truck. Contact k.coker17@gmail.com. (C12)

2006 Volvo cab & chassis with a Vactor 2110 combination vacuum loader and high-pressure sewer cleaning system. (Stock #3483C) www.VacuumSalesInc.com (888) VAC-UNIT (822-8648) (CBM)

Vac-Con industrial machine mounted on a pre-owned 2006 Sterling cab and chassis. (Stock #8593C) www.VacuumSalesInc.com (888) VAC-UNIT (822-8648) (CBM)

Pre-owned Super Products jetting unit mounted on a 1995 GMC Kodiak Cab and chassis (Stock# 5620V) www.VacuumSalesInc.com (888) VAC-UNIT (822-8648) (CBM)

Vac-Con V390LHA combination unit with Roots 827 blower, 1999 International Model 2554 cab and chassis. (Stock #3918C) www.VacuumSalesInc.com, (888) VAC-UNIT (822-8648). (CBM)

Jack Doheny Supplies Inc. offers a full range of late model combo units and DOT industrial vacuum loaders. Call us @1-800-3DOHENY. (PBM)

LEASE/FINANCING

North Star Commercial Credit: Commercial loans for trucks or equipment, flexible purchase programs to fit your budget, 21 years in the industry. Contact **Tom Myers**, 877-804-2274. (PBM)

Quick and easy financing for new or used equipment — without all the headaches. **Credit is not an issue.** We have working capital available for commercial equipment purchases \$20,000 to \$2,000,000. **BSG Services** - Call 866-259-5370 or email bsgfin@earthlink.net (PBM)

Western Equipment Finance, a bank-owned direct lender, is committed to continuing to help you prosper. All equipment types, new or used; we have the best rates and terms you deserve. App-Only Financing and credit decisions within an hour. Call the team you can trust, Jim Stekl at Western Equipment Finance 701-665-1647. jim.stekl@westernequipmentfinance.com (PBM)

LOCATORS

Used RIDGID Navitrack, Gen-Eye Model 100 and Goldak Model 4400. The Cable Center 800-257-7209. (CBM)

MISCELLANEOUS

Titan 8000 series, high performance, RIDGID 8000 Zero-Gravity. The Cable Center: 800-257-7209. (CBM)

Good used concrete molds for sale. 24" Eccentric cone form, bottom female pallet, 48" x 48" barrel form, top male pallet, bottom female pallet, 48" x 48" extended base form, 12" tall flat lid form and cone wire jig. Call 618-228-7702 (P12)

NOZZLES

SAPPHIRE NOZZLES for UHP, laser-etched, heat treated, excellent quality, fantastic savings! 772-286-1218. info@alljetting.com; www.alljetting.com. (CBM)

PIPELINE REHABILITATION



MASTERLINER, INC.
Hammond, LA
1-888-DIG-FREE
985-386-3006; FAX 985-386-0250
liner@masterliner.com
www.masterliner.com C12

One trade-in model of Pipe Genie heavy-duty, pipe bursting equipment. Excellent condition, looks new, 30-ton, 100 feet cable, full 2-year warranty. 877-411-7473. (CBM)

Electric calibration roller MaxLiner CIPP trenchless relining system. Never used, 2 pieces. MaxLiner listed price \$12,000. Asking \$3,500. 804-746-9665 (C12)

Complete lining system, 16' trailer standard and micro lining machine, all tools required to line. Comes with small amount of inventory to do approx. 2 liners. Asking \$45,000. Call 807-473-7330 for more info. (C12)

PORTABLE RESTROOMS



Portable Restrooms for Sale: 100+ units of each model in picture. \$75-\$150.

blallen@frontiernet.net
912-764-9975, GA P12

30 Satellite Synergies for sale. Great for parks & recreation. \$300 each. Northern MN. 218-591-1736. (P12)

Used GOOD condition portable toilets. Prices range from \$75 to \$200. Please contact me at Jmccord@aciservicesllc.net. (P12)

Olympic Deluxe flush units w/urinal and hand sinks. Good condition. \$250 each. NY/CT line. 203-748-6906 (P12)

PORTABLE RESTROOM HAULERS



30 - 40 Portable Toilet Trailers with or without toilets. With 2 portable toilets per trailer. \$600 to \$1,000; depends on condition of trailers and toilets.

Call Don 573-473-4093, MO P12

PORTABLE RESTROOM TRAILERS

2002 Ameri-Can Presidential - needs refurbishing. \$7,500 OBO. Ameri-Can 5-stall - needs refurbishing. 786-533-2519. info@expressportable.com for pictures (P12)



Two (2) restroom trailers for sale, both have men/women side, one has 2 units on each side and the other has one unit on each side. Heater and air conditioner in both units. Built in sewage tank, must have water supply and electric supply. \$9,000 for smaller unit and \$11,000 for larger one. Will make deal if you want both.

740-483-9049, OH P12



1996 20' Ameri-Can Restroom Trailer: 2 stalls/urinal men's side; 4 stalls women's side. Heat and a/c. For more info and photos contact

419-466-1349, OH
or tom@clsrents.com P01

ADA Restroom Trailer: 2012 Wells Cargo (UltraLav). ADA stall + 1 men + 1 women. Great shape, kept under roof. Heat, A/C, water tank. Hydraulics lower trailer to ground. \$25,000. 540-765-7845 Roanoke, Virginia (P12)

6-station portable restroom trailer 10 X 36 certified ADA accessible for sale. Divided 3 stations 1 end and 3 on opposite end for men's vs women's. Floor plan and photos available. Contact gary@templetonconstruction.com or 325-653-6904 for more information. Buyer will need to furnish ramps. \$35,000. (P02)

2 Decons, 28' Tonto, 18' Royal, 2001 ASCI, 16' Presidential, 26' Presidential, portable toilet hauler trailers. 315-437-1291, NY. (PBM)

PORTABLE RESTROOM TRUCKS

1999 Ford F550: 7.3 diesel, rebuilt engine, 500/300, new vacuum pump. 2000 Ford F450: 7.3 diesel, 400/250, Honda vacuum pump. Slide-in unit: New Briggs & Stratton pump, 200/100. For questions & prices email Kerkstraservices@yahoo.com (P12)

PORTABLE RESTROOM TRUCKS



Complete Portable Toilet service truck mount units (turn-key), mounted on your truck or ours. Tool boxes, dual work stations, dc10 washdown pump, reversible vacuum pump, hose reel, set up complete, toilet racks available. 1100 waste/400 fresh: \$21,000, 1700 waste/600 fresh: \$23,500. Any custom options or sizes available!

TexLa Services
936-641-3938

www.texlaservices.com P12



2011 Chevy 3500HD 4x4: 100 fresh/285 waste stainless steel tank on custom aluminum flatbed with 8 ft. tool box. Perfect winter truck with 40,000 miles and Boss snow plow mount. ... \$32,500

Jake 218-298-1291, MN P12



2005 International 4300: DT466, Allison auto., 1,100 waste/400 fresh. Masport HXL400, DC-10 lowered work station. \$32,900

Call or text
419-466-1349, OH P02

Portable toilet pump trucks for sale: 2008 Ford F750 with stainless-steel Best tank, 229k, Cummins 6.2L diesel, Allison automatic under CDL - \$27,900. 2008 Ford F750 with stainless-steel Coleman tank, 113k CAT diesel, Allison automatic under CDL - \$27,900. 2011 Ford F750 with stainless-steel Coleman tank, 77k Cummins 6.2 diesel, Allison automatic under CDL - \$34,000. 330-733-9000 pflynn@superiorportables.com (P01)



2013 GMC 3500: 16,000 miles, 6.0, air, auto, cruise. Best 300/190, 1 1/2 bucket fill lift gate. \$36,500

Work - 870-238-9481
Cell - 870-588-1935, AR P12



2003 Isuzu NPR: Diesel, auto., Keith Huber Tugger pumping unit. Toilet rack hauls two units. \$22,000

Call Mid-America Sanitation
620-249-7386, KS P12
kathyb@midamerica-sanitation.com



Two (2) International Terrastar Trucks Available: 2014 with aluminum tank, 77,500 miles - \$62,500. 2013 with aluminum tank, 67,000 miles - \$65,000. Both trucks have extended warranty up to 200,000 miles.

Call Rodney Lane
270-832-3793 P12

2007 Kenworth T270 aluminum 2,000-gallon \$53,000; 2006 International 4300 1,350-gallon \$39,000; 2002 International 4300 1,350-gallon \$27,000. 256-757-9900 or www.pbsos.com (PBM)

2009 Ford F550: 4x4, diesel, auto., new 950-gallon 650/300 aluminum tank, Conde SDS6, 115cfm Honda 9hp electric start. www.pumpertrucksales.com. Call JR. @ 720-253-8014, CO. (PBM)

2009 Dodge 5500: 4x4, 6.7 diesel, auto., new 950-gallon 650/300 aluminum tank, Conde SDS6, 115cfm Honda 9hp electric start. www.pumpertrucksales.com. Call JR. @ 720-253-8014, CO. (PBM)

2006 GMC: Duramax diesel, Allison auto. New aluminum tank 400 waste/200 water, Conde pump, Honda motor. www.pumpertrucksales.com. Call JR. @ 720-253-8014, CO. (PBM)



2001 Isuzu: 105,000 miles, V8 auto, PW/PL, 300/110 Best stainless tank. 14 ft. bed carries 6 units. Drop gate. \$23,500

231-250-1483, MI P12



2013 Dodge 5500, aluminum 1,300-gallon (1,000 waste/300 fresh) restroom tank, Masport HXL4 pump, diesel engine, pressure system and hose reel, DC10 water pump, excellent condition. Call for pricing.

866-720-4999 P12

2001 International: DT466 engine, Allison MD 3560 transmission. 98 miles on rebuilt engine. 75% or better on 11R22.5 tires. 3,000-gallon tank. 602-438-7402 (P12)

For Sale: Six (6) 2005 Ford F450 diesel pumper vacuum trucks. 300 fresh and 650 waste. Mileage ranging from 235,485 to 283,503. Inquire for pricing. Please call us at 651-429-3781. (P12)

2008 Isuzu NPR HD: Crescent flat tank 550/250, Masport pump, 6-unit carrier, Theiman lift gate. 107k miles, one driver/owner, new tires, works daily. \$45,000 OBO. 203-748-6906 (P12)

PORTABLE SINKS

Used Waterless Hand Sanitizer Dispensers - \$3.00 each. You pay shipping. Uses bag in the box refills. Purchased from Toico Company. 989-777-3609 (P12)

POSITIONS AVAILABLE

Southern California sewer and plumbing company looking for a CIPP Technician using the Perma-Liner small inversion system. Must also know video, jetting and sewer pipe installation. Must have clean driving record, pass drug test and minimum 5 years experience. You will be lead foreman with our crew. Great opportunity for the right person. We are very well-established company in a beautiful area to work in. E-mail your resume to loshogans@aol.com (C12)

CUES Lateral Launch CCTV Operator with PACP Certification, along with Jet Vac Truck and Hydroexcavator/Operators needed. Busy and growing Michigan based company (established in 1977) looking for experienced underground pipeline inspection camera lateral launch operator and CDL drivers for hydrovac, combination vac and high-pressure water jet (sewer and catch basin cleaning) trucks. Mid-Michigan and outlying areas. Positions to start immediately. Experience with CUES equipment, Granite Software and Lateral Launch computer software helpful for the Camera Operator position. 401k, health insurance, eye and dental available. Competitive wage based on experience. Call Jake or Ronnie at 989-892-5828, bring or mail resume with references to 512 McGraw Street, Bay City, MI 48708. Email jakefoco@dependablesewer.com. Full-time, year-round positions. (C03)

GapVax, Inc., a nationally recognized manufacturing business, is seeking a talented, highly motivated individual to fill a full-time Sales Position in the Midwest (Iowa based preferred) region. GapVax is the leading manufacturer of industrial and municipal vacuum units and hydroexcavation units in the United States. We provide the most reliable, comprehensive, and efficient mobile vacuum units in the industrial and municipal markets. Specifications of the position are listed on our website, www.gapvax.com, click on the Now Hiring link in the left hand column. Send resumes to Lthomas@gapvax.com or 575 Central Avenue, Johnstown, PA 15902. (CPMGBM)

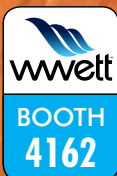
PUMPS

Honda model WP40X, 8 hp, 4" with hoses. Honda 4 hp, 2" pump with hoses. The Cable Center: 800-257-7209. (CBM)

For sale: Used, re-honed Utile 150 vacuum pump. \$250. Eastern Long Island. Call 516-790-8637. (P12)

Buy & Sell all makes and models, new & used vacuum pumps & high pressure water pumps, and good used replacement parts. Call for an inventory sheet and save. **www.VacuumSalesInc.com, (888) VAC-UNIT (822-8648)** (PBM)

SUBMIT YOUR CLASSIFIED ONLINE AT
www.pumper.com



VSI Vacuum Sales Inc.

51 Stone Rd. | Lindenwold, NJ 08021

888-VAC-UNIT | 888-822-8648 | Fax: 856-627-3044

E-mail: sales@vacuumsalesinc.com | www.VacuumSalesInc.com



NEW EQUIPMENT CUSTOM BUILT TO YOUR SPECIFICATIONS



(13887A-E) **2015 Peterbilt 348, cab and chassis** with a New 3,200 U.S. gal., carbon steel, D.O.T. certified 407/412 vacuum tank; dump type with full open rear door and a Presvac PVB 750 vacuum-pressure pump.



(7047C) **1990 ST&E 6,000** U.S. gallon stainless steel, vacuum tank trailer with pump



(1693V) **2004 Peterbilt 330** with a **2004 Progress 3,600 Gallon Tank Presvac PV750 pump**



(4427V) Pre-Owned **2002 Freightliner FL70 cab and chassis** with a 2,300 U.S. Gallon carbon steel vacuum tank. Complete with a Moro Vacuum pump package.



(3378V) **1999 Sterling** with a 3,200 gallon Cusco Master Vac high dump unit.



(8593C) **VacCon industrial machine** mounted on a pre owned **2006 Sterling cab and chassis** "Work Ready"



(8498C) Pre-owned 3,000 U.S. gallon, carbon steel vacuum tank; with a Masport H75W vacuum-pressure pump installed on a **2000 Mack CH613 cab and chassis.**



(3918C) **VacCon industrial machine** mounted on a pre-owned **1999 International cab and chassis**



(3483C) **2006 Volvo Cab & Chassis** with a **Vector 2110** combination Vacuum Loader and High Pressure sewer cleaning system. "Work Ready"



(1364V) **2004 GMC** with Progress 1200 gallon, aluminum vacuum Tank and Masport pump.

RENTAL EQUIPMENT

Liquid vacs, wet/dry industrial vacs, combination jetter/vacs, vacuum street sweeper & catch basin cleaner, truck & trailer mounted jetters. All available for daily, weekly, monthly, and yearly rentals. **VSI Rentals, LLC, (888) VAC-UNIT (822-8648) www.vsirentalsllc.com (PBM)**



1999 Freightliner: Cummins motor, pre-emissions, 8LL transmission. All tires are new, very low miles - 159,250. \$25,000

Call 715-938-0119, WI PBM



2001 Freightliner: 6-speed manual, 2,500-gallon tank w/rear dump, heated valves, Battioni 8000 vacuum pump. Ready for work. \$40,000 OBO

724-837-6084, PA PBM



New 3,800-gallon Tremcar aluminum sanitation/oil non-code truck-mount tank. Two (2) 4" inlets with 1/4 turn hand valves, One (1) 6" rear discharge with air-actuated valve, Two (2) 20" manways, Two (2) 10" fill covers on top of tank. Installation available. ...\$30,000

Call 203-238-6768, CT Ask for Tommy or Jay P01

SEPTIC TRUCKS



2013 International 7600 WorkStar: Classy Truck of Year 2014. Lots of chrome. Max Force 12.4L, 8LL transmission, Eagle interior. Only 51,000 miles and 3,200 hours. 20,000 front, 40,000 rears, 20,000 tag, good tires. Imperial 5,000-gallon stainless steel tank, NVE Challenger 500cfm pump. NO FET TAX! \$175,000

Call 715-938-0119, WI PBM



2008 Kenworth T-800: 350 horsepower, CAT engine, 288,200 miles, 10-speed transmission. A/C, cruise, air-ride. New: 3,500-gallon tank, stainless steel hose trays, and Jurop LC429 vacuum pump (all working equipment is NEW). New tires, brakes and drums. Truck is perfect inside and out. \$75,500

740-820-5520, OH P12



1996 International: 6-speed, 2,500-gallon tank, new transmission and drive line, Fruitland pump. 218,282 miles. It's a good truck, just upgrading to a newer truck. Price includes hoses! If you have any questions, please feel free to call!

580-332-5157, OK P12

Pre-owned 2000 International 4900 cab and chassis with a 2,500 U.S. gallon carbon-steel vacuum tank. Complete with a Jurop R260 vacuum pump package. (Stock #8516V) **www.VacuumSalesInc.com (888) VAC-UNIT (822-8648) (PBM)**

2006 Kenworth T800 quad-axle cab & chassis with a 2001 Somerset 4,500 U.S. gallon, full-opening rear door, vacuum tank and Robushci Series 65 vacuum blower. (Stock# 8893C) **www.VacuumSalesInc.com (888) VAC-UNIT (822-8648) (PBM)**

wwettshow.com

Feb. 17-20, 2016
Indiana Convention Center

wwettTM16

Water & Wastewater Equipment, Treatment & Transport Show



Act Now!

Make your plans early to attend
the industry's largest annual event!

Represented Industries

- Septic Pumping
- Onsite Installation
- Portable Sanitation
- Dewatering
- Grease Handling
- Sewer Cleaning
- Laterals & Mainlines
- TV Inspection
- Pipeline Rehab/CIPP
- Waterblasting
- Plumbing
- High-Pressure Cleaning
- Safety Equipment
- Confined Space
- Lift Stations
- Computer Software
- Industrial Vacuuming
- Hydroexcavation
- Trenchless Pipe Repair
- Utility Location

And Much More!



Save \$30!

\$70
PER PERSON
WHEN YOU
REGISTER BY
Jan 22nd.

\$100 per person at the door.
Children 12 and under admitted free.

Register online at wwettshow.com
or call 866-933-2653

Education Day Sessions

Wednesday, February 17, 2016

NAWT

National Association of Wastewater Technicians
Rooms 234-236

- 8 a.m. Basics of Septic System Control Panels
- 9:30 a.m. Using Septic Control Panels to Troubleshoot Systems
- 11 a.m. Inspecting Concrete Sewage Tanks
- 1:30 p.m. An Exercise in Septic System Troubleshooting
- 3 p.m. The Basics of Inspecting Drip Systems
- 4:30 p.m. NAWT Ask the Experts Panel Discussion

SSPMA

Sump and Sewage Pump Manufacturers Association
Rooms 133-135

- 8 a.m. Understanding Pumps and Common Pumping Issues
- 9:30 a.m. Evaluation and Installation of Backup Pump Systems
- 11 a.m. Best Installation Practices for Trouble-Free Pump Controls
- 1:30 p.m. Troubleshooting Pumps, Panels and Switches with Digital Multimeters
- 3 p.m. Sizing Guidelines for Sump, Sewage and Grinder Pumps
- 4:30 p.m. SSPMA Ask the Experts Panel Discussion

Business Strategies

Rooms 140-142

- 8 a.m. How Much Should I Charge?
- 9:30 a.m. Business Game Changers: Top 5 Secret Strategies for Massive Growth in Your Service Business
- 11 a.m. The Un-Business Plan – Making Your Business Less Complicated But More Profitable
- 1:30 p.m. How to Use Superior Customer Service to Increase Sales
- 3 p.m. Reward the Right Stuff: Finding, Training and Keeping Great Team Members
- 4:30 p.m. Is Your Business Prepared for a Crisis?

Industry Safety

Rooms 237-239

- 8 a.m. Pre-Engineered Shoring Systems for Cross-Trench Utility Challenges
- 9:30 a.m. Excavation Safety
- 11 a.m. OSHA Confined Space, Air Monitoring and Fall Protection Explained

SSCSC

Southern Section Collection Systems Committee
Rooms 231-233

- 8 a.m. Positioning Yourself for Promotion and Succession Planning
- 9:30 a.m. Step Up Your Game! Taking Current CCTV Inspection Technology to the Next Level
- 11 a.m. Trailer Jetting – Getting the Most Out of Your Equipment
- 1:30 p.m. Vacuuming: the Other Half of the Combination Unit
- 3 p.m. Sewer System Maintenance – Challenges and Solutions
- 4:30 p.m. SSCSC Ask the Experts Panel Discussion

NOWRA

National Onsite Wastewater Recycling Association
Rooms 240-242

- 8 a.m. Introduction to Soils
- 9:30 a.m. Onsite Septic System Loading Rates and Site Layout
- 11 a.m. Making Infiltration Decisions – Understanding Soil Surface Design
- 1:30 p.m. Soil Dispersal Comparison
- 3 p.m. Introduction to the Elements of Onsite System Design and Regulations
- 4:30 p.m. Onsite Septic System Hydraulics and Pump Design

Portable Sanitation

Rooms 136-138

- 1:30 p.m. Marketing Basics: How to Effectively and Efficiently Grow Your Portable Sanitation Sales
- 3 p.m. Trust – How to Build it and Use it to Grow Your Portable Sanitation Business
- 4:30 p.m. Portable Sanitation Forum: Current and Future Critical Issues Affecting the Industry Discussion

NASSCO

National Association of Sewer Service Companies
Rooms 130-132

- 8 a.m. Cleaning Nozzle Technology
- 9:30 a.m. Large vs. Small-Diameter Pipe Cleaning
- 11 a.m. The Lower Lateral – The New Frontier in Sewer Rehab
- 1:30 p.m. Chemical Grouting Technologies
- 3 p.m. The Growth of the UV Cured CIPP Process
- 4:30 p.m. NASSCO Ask the Experts Panel Discussion

Treatment Plant Operator

Rooms 243-245

- 8 a.m. Effective Strategies for Collections System Management
- 9:30 a.m. Sustainable Innovation in Biosolids Management
- 11 a.m. Pretreatment and Wastewater Lagoon Management
- 1:30 p.m. Septage Collection and Treatment
- 3 p.m. Large Scale FOG/Septage Receiving Station – Lantern Environmental Project Case History
- 4:30 p.m. Progress in Electrochemical Water Treatment in Last Century

WJTA-IMCA

Water Jet Technology Assoc. - Industrial Municipal Cleaning Assoc.
Rooms 237-239

- 1:30 p.m. Proper Industrial Truck Maintenance Can More Than Pay for Itself in Productivity and Safety
- 3 p.m. Air Conveyance Through an Industrial Vacuum Truck
- 4:30 p.m. Vacuum Excavation Applications and Opportunities

Women in Business

Rooms 136-138

- 8 a.m. Marketing to Women
- 9:30 a.m. Women of Wastewater: Building a Community of Allies
- 11 a.m. Women in Wastewater Roundtable

Vacuum Truck Equipment and Operation Training

presented by NAWT National Association of Wastewater Technicians

Rooms 109-110 8 a.m. - 5 p.m.

This day-long session will discuss in detail the equipment on vacuum trucks and how to operate them. Pumping terms will be covered, as will safety principles, materials often encountered on the job and government regulations.



WWETT Education Sessions

Thursday, February 18, 2016

Liquid Waste Treatment & Disposal

Rooms 130-132

- 8 a.m. Analysis of Drainfield Failures and Restoration Methods
- 9:30 a.m. Cash In on Community System Operations and Maintenance
- 11 a.m. Ultra-Efficient Inspection Technique to Locate Leaks on Septic Systems

SSCSC Sewer & Drain Cleaning Course

Rooms 231-233

- 8 a.m. Hands-On Nozzle Technology
- 10 a.m. Hands-On Jetter Hose Maintenance – Care and Repair

Sewer & Pipe Rehabilitation, Relining & Repair

Rooms 234-236

- 8 a.m. Take Control of Inflow and Infiltration in Manholes
- 9:30 a.m. When Things Go Wrong on a Lining Job
- 11 a.m. Taking Small-Diameter Drain Lining Inside Infrastructure

Sewer & Drain Cleaning, Inspection & Repair

Rooms 133-135

- 8 a.m. Using the Clean Water Act to Grow Profits
- 9:30 a.m. Winning Trench Warfare – Finding Profitability in Sewer/Septic Work
- 11 a.m. Your Best Shot at Sewer Success – How to Get the Most From Inspection Technology

Onsite Septic Installation, Repair & Design

Rooms 237-239

- 8 a.m. Overview of Application, Design, Installation and Operation of Drip Dispersal Systems
- 9:30 a.m. Onsite System Pump Design Made Easy
- 11 a.m. The Onsite Wastewater Industry and Our Carbon Footprint

Treatment Plant Operator

Rooms 243-245

- 8 a.m. Smart Water Technology in Theory and Practice
- 9:30 a.m. Dissolved Ozone in Municipal Collection, Treatment and Disposal
- 11 a.m. Municipal Biological Waste Treatment

Business Strategies

Rooms 136-138

- 8 a.m. How Self-Employed People Can Make More Money
- 9:30 a.m. Growing Your Business in a Tough Economy
- 11 a.m. Staying in Front of Your Customer

NOWRA Design Course

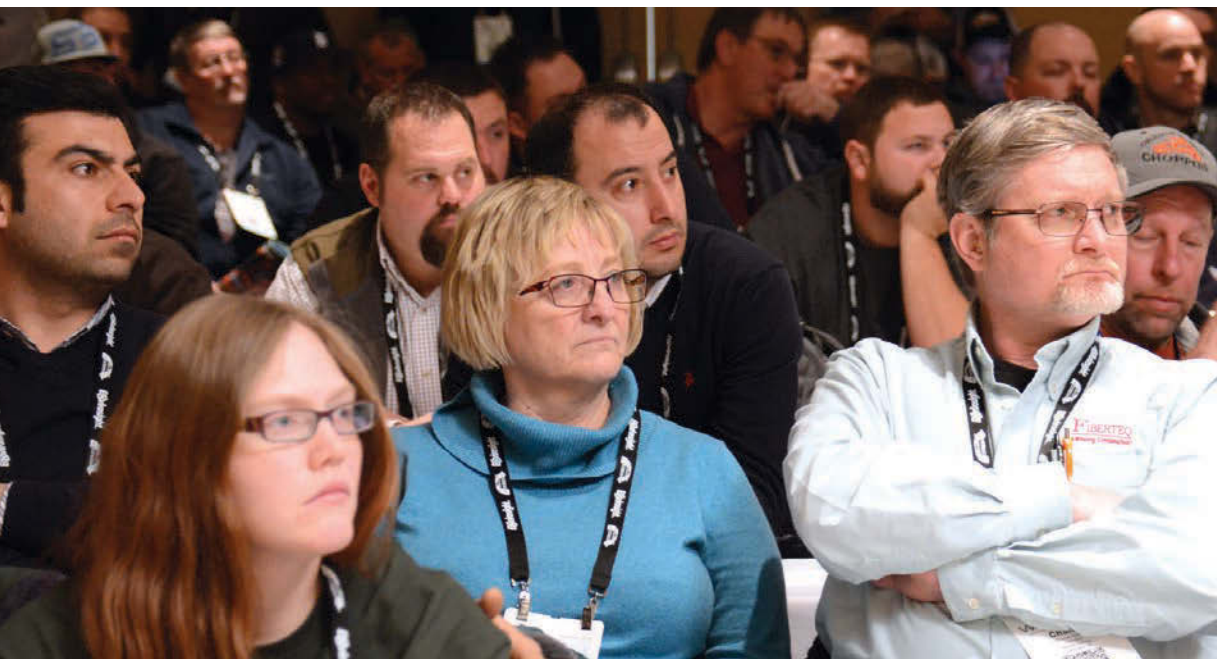
Rooms 240-242

- 8 a.m. Mound and At-Grade Design
- 9:30 a.m. Low-Pressure Pipe in Drainfield Distribution
- 11 a.m. Subsurface Drip Irrigation

Municipal Sewer & Water

Rooms 140-142

- 8 a.m. How to Recover Non-Revenue Water
- 9:30 a.m. Phased Assessment Strategy for Sewers - Understanding Sewer Condition Quicker with Fewer Resources
- 11 a.m. The Science of Pipe Cleaning – Flow and Pressure



Many states approve WWETT education sessions toward fulfilling required certified education units or professional development hours.

See wwettshow.com for a list of approved states and courses.

Friday, February 19, 2016

Liquid Waste Treatment & Disposal
Rooms 130-132

- 8 a.m. | Fact vs. Fiction: The Top Ten Septic Myths
- 9:30 a.m. | All About Facultative Bacteria
- 11 a.m. | Brown Grease Recovery From Grease Trap Waste: Science and Economics

Industry Safety
Rooms 140-142

- 8 a.m. | Identifying and Managing Risk in a Septic or Sewer Business
- 9:30 a.m. | How Well Do You Know Your Cleaning Hose?
- 11 a.m. | Pathogen Exposures to Workers in the Onsite Industry

Business Strategies
Rooms 240-242

- 8 a.m. | Creating a Data-Driven Strategic Marketing Plan
- 9:30 a.m. | What Every Sewer and Drain Contractor Needs to Know About Asset Protection, Tax Reduction and Estate Planning

Municipal Sewer & Water
Rooms 240-242

- 11 a.m. | GIS: Empowering Water, Wastewater and Waste Removal Organizations

Sewer & Drain Cleaning, Inspection & Repair
Rooms 133-135

- 8 a.m. | Advanced Pipe Bursting
- 9:30 a.m. | Low-Latency, High-Definition Video Over Coaxial Cable for Remote Inspection
- 11 a.m. | Plumbers vs. Technicians: The Slow Decline of the Tradesman

Municipal Sewer & Water
Rooms 231-233

- 8 a.m. | Using Acoustic Inspection to Prioritize Sewer Cleaning
- 9:30 a.m. | Evaluation of Automatic Filters for Nozzle Protection in Recycled Water Applications
- 11 a.m. | Flow Monitoring — How to Make Your Program Successful

Treatment Plant Operator
Rooms 243-245

- 8 a.m. | Insights into Ozone Water Treatment Plants
- 9:30 a.m. | Wastewater Microbiology
- 11 a.m. | How to Ensure Gold is the Result — Choosing the Right Dewatering Equipment

Business Software & Technology
Rooms 136-138

- 8 a.m. | Know the State of Your Business Using Business Charts and Reports
- 9:30 a.m. | Using Software to Save Time and Increase Profits
- 11 a.m. | Using Mobile Devices for Business

Sewer & Pipe Rehabilitation, Relining & Repair
Rooms 234-236

- 8 a.m. | Buying Back Capacity
- 9:30 a.m. | Successful Reduction of I&I Using the Holistic Approach to Sewer Rehabilitation
- 11 a.m. | Large Scale Centrifugally Cast Concrete Pipe Culvert Rehab in CO Dept. of Transportation Region 1

COLE Publishing's Onsite Installer Course

Rooms 237-239 8 a.m. - 5 p.m.

This day-long session will walk professionals through an introduction to proper installation practices for the sustainable use of onsite treatment systems



Detailed session information available at:
www.wwettshow.com



SEPTIC TRUCKS



Turn-Key Vacuum Tank Units: 3,600-gallon, unit mounted on your truck or ours; \$23,500. 2,500-gallon truck units; \$20,000. 1,500-gallon truck units; \$17,000. Self-contained vacuum skids, 1,000-gallon; \$11,000. 2,500-gallon painted tanks ready to mount; \$13,000. PortaPotty trucks and any custom options or sizes available!

TexLa Services
936-641-3938

www.texlaservices.com P12



2013 Freightliner M2-112: 21,445 miles, Progress 3,600-gallon aluminum tank w/Masport 400 & deodorizer. Detroit DD13 450hp. Fuller 10-speed, Jake brake. 16k front, 40k rears. DEF/CARB compliant. Air ride, air seat, A/C, power mirrors, windows & cruise. Removable vinyl graphics. Full service records, excellent condition. More photos/details available upon request. \$128,500

glenn@advanced-septic.com
805-674-7222, CA P12



2011 & 2014 Internationals, 2012 Peterbilt: All have Masport pumps, Cummins and low miles. Sell as fleet or individually. Contact me for photos and prices.

717-250-1837, PA P12

Pre-owned 2005 International 7500 series cab & chassis with a Progress 4,200-gallon (200 water; 4,000 waste) vacuum tank with a Wittig RFL100 vacuum pump and a General EKL22 water pump. (Stock# 8646V) www.VacuumSalesInc.com (888) VAC-UNIT (822-8648) (PBM)



1999 Freightliner FL70 septic truck: 150,000 miles, 330hp CAT with Allison automatic. 500cfm Wittig water-cooled pump. Truck also has Harben jetter 4,000psi @18gpm with hydraulic reel and 500 ft. of new 1/2" jetter hose with heads. Hydraulic dump bed and digital liquid level gauge. Truck will run app. 80mph loaded or unloaded. This truck was built to image our larger Keith Huber Dominator Units. 2,400 waste/250 fresh. 6" dump air valve along with back & side 4" pumping valves. This unit is the baddest small unit in the Southeast hands down. Miles will increase since we use it daily. Our new unit arrives in 3 weeks.

678-906-0712, GA P12



1996 International: 6-speed, 2,500-gallon tank, new transmission and drive line, Fruitland pump. 218,282 miles. It's a good truck, just upgrading to a newer truck. Price includes hoses! If you have any questions, please feel free to call!

580-332-5157, OK P12

Pre-owned 3,000 U.S. gallon carbon steel vacuum tank with a Masport H75W vacuum-pressure pump installed on a 2000 Mack CH613 cab and chassis. (Stock# 8498C) www.VacuumSalesInc.com (888) VAC-UNIT (822-8648) (PBM)

2002 Freightliner FL70 with a Presvac 2,300 US gallon carbon-steel vacuum tank and Fruitland pump. (Stock# 4427C) www.VacuumSalesInc.com (888) VAC-UNIT (822-8648) (PBM)

1999 International 8100: C10 CAT motor, 10-speed transmission, 370hp, 270,000 miles. MEC 8000 pump, 6" dump, 4" suction, heated valves. Runs and drives great, ready to pump. Questions call 920-765-1903. Pictures upon request by email or text. (P12)

1983 Ford 8000 with 1999 model Specialty B 1,800-gallon tank and Jurop pump. 3208 CAT engine with a 10-speed transmission. \$12,000 or make offer. Call 870-423-8654 for more info or pictures. (P12)



2011 International 5900i Series w/ Cummins 450hp, 8-speed double low. Loaded. 282,000 miles. 2011 Advance tank 5,500-gallon aluminum. NVE 4310 blower, heated NVE valves. \$103,000

Call Dave or JR -
724-222-6080, PA P02



1999 Volvo: 400hp Cummins, Transway 3,800-gallon tank. New Fruitland pump March 2015, hoist just rebuilt. New transmission, 160k miles. \$70,000

Mike 443-235-5979, DE P12



1998 Peterbilt pumper truck with 3,500-gallon tank. Moro pump Model 3220 new in 2012. Pumps great. Truck runs and drives great. \$29,500

773-491-6093, IL P01



2007 Mack CV700: Mack 460, Jake, 18-speed, 18/46 with 20,000 lift. Double frame, 4,000-gallon steel septic tank, Masport pump. Work-ready.

716-685-6757, IL P12

Flexible and Affordable Financing Options

Financing for New and Used Equipment

Trucks • Tanks • Trailers • Toilets • Cameras • Jetters
Computer Hardware & Software



7 Church Road, Hatfield, PA 19440
Phone: 800.422.1844
Fax: 888.883.9380
Visit our website: www.libertyfg.com

Call Michael DeGroat (ext 112)

Commercial Equipment Financing Call 800-422-1844

SEPTIC TRUCKS



1999 Kenworth T-300: Rebuilt 3126 CAT motor & 6-speed Eaton transmission, brand-new clutch. 2,500-gallon tank 5/16" thick. 2014 model new Jurup PN84, remote-control valve.

Call or text Jerry at
918-381-9072, OK

P01



Very clean 1993 International 4900, 7-year-old 2,500-gallon tank, 180k miles, 6-speed transmission. NEW vacuum pump, NEW brakes. Tires 80%. Completely refurbished. Asking \$25,000

Give us a call anytime at
317-635-0000 or 317-517-6882, IN

P12



1998 Kenworth T800 truck with 3,500-gallon tank and Challenger 360 pump. 4 new tires. Asking \$29,999. Please call Tony during normal business hours and weekends:

508-954-9994, MA

P12



Must See this Sweet 2003 Pete! Lely 3,600 gallon, aluminum hoisted tank w/ full-opening rear door. NVE460 vacuum pump, 110-gallon water tank w/DC10 pump. Always garaged. Very nice truck. Buy it now! \$95,500

217-337-5996, IL

P12



2007 Freightliner M2 with a new Imperial 2,500-gallon steel tank, 260hp Mercedes engine, air ride, power heated mirrors, driver-controlled differential lock, NVE607 360cfm Challenger pump, aluminum hose trays. Stock# 418027.

Call **920-997-4922**

P12

2006 GMC 7500: Isuzu diesel, 210hp, Allison auto., under CDL. New 1,850-gallon vac tank, build in progress. www.pumpertrucksales.com. Call JR. @ 720-253-8014, CO. (PBM)

1995 Freightliner: Detroit Series 60, Fuller 13-speed, 3,365-gallon vac tank, Masport pump. www.pumpertrucksales.com. Call JR. @ 720-253-8014, CO. (PBM)

1987 Kenworth T600A: CW CAT 6-cylinder. Eaton-Fuller 15-speed. 8-bag A-R suspension. 3,365-gallon vacuum tank, Masport 75 pump. \$31,000. www.pumpertrucksales.com. Call JR. @ 720-253-8014, CO. (PBM)

2000 Peterbilt: 300hp CAT, 9-speed, rear locking. Excellent condition. New 2,500-gallon vac tank. www.pumpertrucksales.com. Call JR. @ 720-253-8014, CO. (PBM)

1996 Western Star: Detroit Series 60, 18-speed transmission. Hendricks suspension. 3,365-gallon vacuum tank, Masport 400 pump. www.pumpertrucksales.com. Call JR. @ 720-253-8014, CO. (PBM)

1994 Peterbilt 377: Detroit Series 60, 10-speed transmission. 3,365-gallon vacuum tank, Masport HXL pump. www.pumpertrucksales.com. Call JR. @ 720-253-8014, CO. (PBM)

2005 Ford F750 XLT: 5.9 Cummins, 245hp, 7-speed, 122,500 miles, under CDL. New 1,850-gallon vacuum tank, new Patriot 300 vacuum pump. www.pumpertrucksales.com. Call JR. @ 720-253-8014, CO. (PBM)

2003 International 4300: DT 466 new in-frame overhaul; Allison auto., 136k miles, used 1,200-gallon steel vac tank, under CDL; PV3 vac pump. www.pumpertrucksales.com. Call JR. @ 720-253-8014, CO. (PBM)

2008 Ford F750: 260 Cummins, 7-speed, rear locking differential, New 2,500-gallon vac tank, new Jurup pump. www.pumpertrucksales.com. Call JR. @ 720-253-8014, CO. (PBM)

Eight great older pump trucks - \$35,000 each. Big power. Jake brakes. 3,365-gallon vacuum tanks, Masport pumps. All makes & models. www.pumper-truck.com. Call JR @ 720-253-8014, CO. (PBM)

SERVICE/REPAIR

Dynamic Repairs - Inspection Camera Repairs: 48 hour turn-around time. General Wire, Ratech, Ridgid, Electric Eel, Gator Cams, Insight Vision, Vision Intruders. Quality service on all brands. **Rental equipment available.** For more info call Jack at 973-478-0893. Lodi, New Jersey. (PBM)

SLIDE-IN UNITS

New 600-gallon slide-in unit. Jurup/Honda powered. \$7,500. 337-315-0692 (P12)

New 500-gallon slide-in unit. Jurup/Honda powered. \$7,500. 337-315-0692 (P12)

SLUDGE APPLICATORS

1986 Field Gymmy Truck: Blue, 427 automatic. 2,000-gallon stainless steel tank, newer Moro pump. Floater tires. Extra set of new tires. 1976 GMC parts truck included. Good shape. \$15,000. 802-477-2716, VT (P05)

1988 2004 Ag Chemical Terra Gator: Yellow, 2,200-gallon tank, Moro pump. Factory-rebuilt 519 Cummins motor - 200 hours. New built, 10-speed Road Ranger transmission, injectors, floater tires. Good shape. \$32,500. 802-477-2716, VT (P05)

TANKS



2011-2012 ITI Stainless Tanks. 105 bbl. 232" length x 76" diameter, 4,615 gallons. 3/16" stainless steel, heated valves, sight glasses. National Vac 4310 pumps included. Approx. 4,800 lbs. \$18,000 each. 50+ available. Delivery available. More photos at www.stanleystrucksales.com P12

Call Stanley's Truck Sales
Dayton, Ohio 888-516-3345
or after hours 937-430-4093
or email tsgeneva@hotmail.com

New 3,600-gallon septic unit with new pump. Call for details. \$18,500. 337-315-0692 (P12)

New 750-gallon flatbed portable toilet unit. Honda/Jurup power. \$8,500. 337-315-0692 (P12)

Bladder tank, 52,800 gallons, 18ft x 105ft, rubber/canvas L bag. Vented with two 4" valves and one 6" valve. Very good condition - never moved. \$10,000 OBO. John at jehgw@ms.com or 406-581-5692. (P12)

Vacuum Tanks - New: Sizes from 1,000-4,300 gallons. All complete! Delivery available. www.JEagleTanks.com. Contact Jerry: JEagleTanks@yahoo.com or **800-721-2774.** (PBM)

2008 LMT 3,000-gallon carbon steel vacuum tank. (Stock# LMT3000V) www.VacuumSalesInc.com (888) VAC-UNIT (822-8648) (PBM)

Pre-owned 4,000 U.S. gallon, carbon-steel vacuum tank. (Stock #4000V) www.VacuumSalesInc.com (888) VAC-UNIT (822-8648) (PBM)

Pre-owned 2,000 U.S. gallon, stainless steel vacuum tank with a Masport HXL75V vacuum pressure pump package (Stock# 6008C) www.VacuumSalesInc.com (888) VAC-UNIT (822-8648) (PBM)

TOOLS

Crust Busters: Portable, lightweight machine, guaranteed to mix up septic tanks and grease traps! Save time and money! www.crustbusters.com, 1-888-878-2296.(PBM)

T&T Tools, Probes, Hooks: Probes feature steel shafts with threaded and hardened tips. The insulated **Mighty Probe™** tested to 50,000 volts. **Top Poppers™** open manhole covers easily. Free catalog. www.TandTtools.com. Phone **800-521-6893.** (PBM)

RIDGID model #300 with stand, RIDGID tri-stand vises, RP 330 ProPress kit. The Cable Center: 800-257-7209. (CBM)

Ritchie Yellow Jacket Recovery System & BULLET 7 cfm pump. The Cable Center: 800-257-7209. (CBM)

Bosch Brute hammer drill with cart irons. The Cable Center: 800-257-7209. (CBM)

TOYS

Septic pumper and vacuum die-cast toy trucks: In your choice of colors and logos, several cabs available. Call 877-450-2100, write to Granite State Collectibles, PO Box 440, New Ipswich, NH 03071; or www.granitestatecollectibles.com. (PBM)

TRAILERS- VACUUM/TANKER



Imperial Vacuum Trailers: In stock, 6000- and 6300-gallon aluminum single-compartment Imperial vacuum trailers.

Call Kyle
800-558-2945 Ext. 424 PBM



Pumper Trailer: Moro pump, Honda GX690 motor. 75" tall, 80" wide, 3,900 lb. empty weight, 415cfm, 29psi, aluminum Tank. Short lead time. \$34,700

Call 952-412-5889, MN
Probizinc.com P12

2015 Acro Vacuum Trailer: Stainless steel 6,000 gallon, DOT certified double conical with air-ride suspension. Aluminum wheels all positions, full hose trays, OSHA walkways and railings. Vacuum pump option either hydraulic or self-contained. KLM Companies 617-909-9044 (PBM)

New 2015 Year EMI Vacuum Trailer: 130 bbl. (5,640 USG) steel vacuum trailers - MUST GO! \$26,950 each. (2) in stock now! Light weight #16,500 empty shell thickness 1/4", heads 5/16" thickness, (3) internal dished baffles, submerge arc-welded. Full-length hose tray/fender combination, (8) external rings, (2) top 20" man ways, (1) rear 20" man way, front primary. 2" rear sight tube, partially-enclosed walkway. Hutchins 9600 Series spring ride on #25,000 tube axles with ABS brake system. 2-speed landing gear, (1) 6" rear valve in sump, 3" D/S load line. Tanks are epoxy-lined inside with Americoat 240. Optional: Pumps all makes and brands. \$26,950 each. (2) In stock, ready for work. 877-500-3993, 785-562-6848 mobile, www.emisales.net (P12)

TRUCK PARTS & ACCESSORIES

Everything to dress up your truck! FREE FULL-COLOR CATALOG. Phone: 800-270-6003. Website: virgofleet.com. Virgo Nationwide, 8027 Foster Ave., Brooklyn, NY 11236 (PBM)

TRUCKS - MISCELLANEOUS



2016 Peterbilt 567: Stock# 307249D. Ideal for contractor, bulk, bodybuilder or oil applications. 485hp ISX15 engine, RTLO16918B transmission, Peterbilt Air Trac suspension, 312 wheel base. White exterior, titanium interior.

Contact Len Wiersma
Office 262-547-0001
Cell 815-978-7482
LWiersma@jxe.com P12



2016 Peterbilt 348: Stock# 308576M. Ideal for contractor, bulk, bodybuilder or oil applications. 300hp PX-9 engine, FR9210B transmission, tandem-axle chassis, RT403 suspension, 254 Wheel Base. White exterior, grey/black interior.

Contact Len Wiersma
Office 262-547-0001
Cell 815-978-7482
LWiersma@jxe.com P12

TV INSPECTION

USED Envirosight ROWER System: Brand new RC90 camera. Cable reel (SN 360570) has new power supply, motor, clutch, cable (656') and winding rollers. 125 crawler (SN 0260768) has new top plate, side plates, axles and seals, plus new control board compatible with rear-view camera accessory (not included). CCU (SN 0160981) with new power card, new 56V card, new +/-26 card, and new card. Control pendant (SN 0492645) is compatible with RC90 camera and R225 crawler. \$27,500. Call 973-252-6700. (CBM)

CUES Inspector General Pipe Inspection System: Can be used as a push camera or mainline. 200' push reel, 500' mainline, two camera crawlers, new DVR. Works great. \$6,000. Call 518-337-9420. (C12)



1990 Chevrolet P30 Camera Van with newer CUES camera system. Camera was recently replaced and has pan & tilt and lateral launch. Includes field unit and 1,100 ft. of cable. Onan generator (rebuilt last year) and back bumper winch hoist. All-aluminum body. Low miles - motor and transmission was completely rebuilt. Previously city-owned and maintained. Excellent condition. Includes all books and manuals. Can email more photos. \$22,000 OBO

For more information
contact Ron at 270-554-3711
or 270-556-4275, KY C12

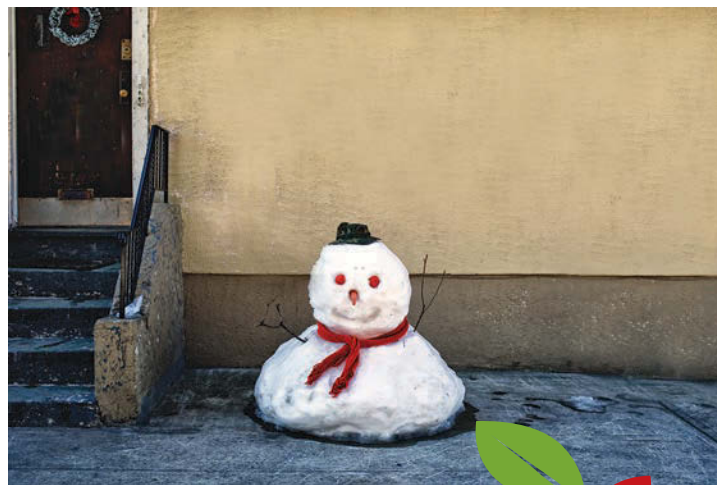


Envirosight Rover 125 Camera and Crawler: Includes a new 650' cable worth \$7,000 as well as an extra with approx. 600'. System is ready to start making money. \$20,000

952-873-3292, MN P12

2011 QUES camera truck with K-2 wireless system, Lamp 2 and CVC 460 on 2011 Ford E450 with 6.8-liter and Onan 7hgjae-2132e generator. 50,884 miles. Clean inside and out. \$21,600. 702-664-4315 (P12)

1998 Ford Box Van with V10 motor, 2004 Aries CCTV equipment w/air reel. POSM operating w/2 pan & tilt cameras, tractor, cutters. I also have equipment to outfit another van pcu, reel, controls, etc. All equipment in working order. Contact k.coker17@gmail.com (C12)



Season's
Greetings

Wishing you a wonderful holiday season
and a prosperous new year!

YOUR FRIENDS AT COLE PUBLISHING

TV INSPECTION



2002 Ford E-450, Night Owl Series camera, fleet maintained, one owner. \$37,950

Call 719-494-4927, CO C12
or visit letsrollautoandequipment.net



2011 Envirosight Supervision mainline and lateral launch system. 2011 GMC Savanna. PTZ mainline camera, PTZ launch camera, 1,000' cable, newer push cable. Complete van ready to go. \$145,000 OBO

Call 317-773-7996, IN C01

2011 Ford E450 CUES CCTV Truck: 16', 6.8 gas motor. \$175,000. HIC TV Lamp II, 50,884 miles, K-2 wireless system, Onan generator. OZIII camera LED incl. MZ300-3I wtr. trac transporter TX361-1 7"-15" ext. kit wtr trac TX903 Lamp II launcher w/rvc LM350-3 s/n: RVC Lamp II WM325-1 lateral camera SR300-13 granite inspection GX850-3. Good condition, runs great. 702-373-5234 (C12)

PEARPOINT — Mainliner buying & selling used equipment. Canada & USA PEARPOINT MAINLINE EQUIPMENT ONLY. Will buy complete Pearpoint trucks. Will buy your old system. Do you need parts? 399, 599 reels; 420, 448 tractors: 494 digital and zoom 420 light heads. Call 800-265-4298 or mainliner2075@hotmail.com (C04)

Cyclops TV inspection trailer: AC, records on DVD. Crawler for camera will need a new motor. Cyclops pipe inspection trailer includes: Panasonic PV4509 video recorder, Hitachi video color monitor, TV camera control unit CB301 transporter control PW151B video data generator TD820 Camera/Rover VN002. 409-880-5725 (C12)

Used SeeSnake Camera Systems in all sizes; Used General Wire Spring Camera Systems in all sizes; Used machines in all sizes. We want your trade! The Cable Center: 800-257-7209. (CBM)

NEED TRACTION? We make aftermarket more aggressive pads and chain assemblies for all chain-driven camera tractors. Custom, dependable, double-hole fabrication secured to high quality carbon steel chain, or just pads and rivets. Samples upon request. **Pipe Tool Specialties LLC:** 888-390-6794; Fax 888-390-6670; www.yourtractionpads.com or email pts4422@yahoo.com (C12)

Used and rebuilt camera kits in stock: RIDGID Mini Compact, Mini Color, Standard Self-Leveling, General Gen-Eye I, II and III, Aries Seeker, and SRECO kits. The Cable Center: 800-257-7209. (CBM)

VACUUM EQUIPMENT



FOR SALE: 2015 Kenworth T370 w/2,800-gallon Pac-Mac vacuum system. 10gpm Jetter w/500' of 1/2" hose. Manufacturer's unit discount pricing. \$160,000 w/FET.

Please contact Jimmy @
mckee.jimmy@keithhuber.com
or **601-670-5238, MS** P12

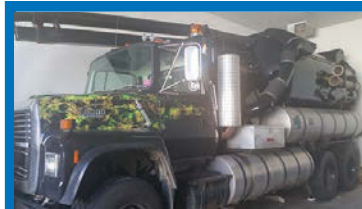


1991 Mack chassis with Super Sucker, Model 5017 wet/dry system. Unit operates daily and is work-ready. \$35,000. For more information contact Matt Timberlake
207-754-4282, ME C12

1999 Ford F450 Super Duty XLT: 300K miles, 7.3 T.D., automatic transmission. Air conditioner, power windows, power locks, tilt, cruise, recline seats. 1,000-gallon capacity tank, Jurovac vacuum system, custom service body. \$15,000. For more information/photos call 985-807-3554. (P12)

VACUUM LOADERS

1999 Sterling with a 3,200-gallon Cusco Master Vac high-dump unit. (Stock# 3378V) **www.VacuumSalesInc.com (888) VAC-UNIT (822-8648)** (PBM)



1992 Ford Vactor: 80 gallon @ 2,000psi, 29,237 miles. New black paint, new wrap on the cab with flames. Low hours on a new pump. The fan has been rebuilt. New tires, new lower tanks. Very nice unit. Must see. \$45,000 OBO

Please call 651-334-4446
or **612-414-2727, MN** P12

2001 Gap Vax HG57 WET/DRY on Volvo WG64, 5,500 cfm, 27" Hibon blower, Cummins engine, chassis tank and bag house, in good condition, ready for work. KLM Companies 617-909-9044 (PBM)

2007 Presvac PV750 3,300-gallon vac unit on 2005 Mack truck. Just serviced and in good condition with 592,298 miles and 16,337 hours. Asking \$85,000. Call Vista Environmental, Inc. 804-752-4815 (P12)

WANTED

Wanted to Buy: Vactor 2100s and late model Guzzlers. Cash. Phone 800-336-4369. (PBM)

Wanted: Portable toilets, handicap toilets, and hi-rise units. Please contact Lance 561-346-9296 or lance@redtoilets.com (P12)

WATERBLASTING

Gardner Denver T-375M: Bare Shaft pump. Gardner Denver T450M Bare Shaft pump. Gardner Denver TF-375M 21 gpm @ 10,000 psi. Gardner Denver TX-450HB 21 gpm @ 20,000 PSI. Gardner Denver TF-450MB 52gpm @ 10,000 psi. NLB 10-200. 34 gpm @ 10,000 psi. HT-150S 25 gpm max 10,000 psi max, Shell Side Machine, Wheatley 165: 30 gpm @ 10,000 psi. Wheatley 125 with aluminum bronze fluid end. Boatman Ind. 713-641-6006. View @www.boatmanind.com. (CBM)

WATER JETTING EQUIPMENT: We sell, repair and retrofit water blasters. Visit us at: www.waterjettingequipment.com or phone 714-259-7700. (CBM)

40,000 psi Sapphire Nozzles, UHP hoses & replacement parts. Excellent quality & prices. 772-286-1218, info@alljetting.com, www.alljetting.com. (CBM)

FILL a job opening

BID OUT an upcoming job

ANNOUNCE
contracted services offered

SELL
used equipment

OBTAIN
a position wanted

FIND IT THE CLASSIFIEDS!

In Pumper magazine and on the web.

Pumper.com



PLACE YOUR AD ONLINE AT www.pumper.com

SHOWS NO
MERCY
EXCEPT TO
BURIED

GAS lines
INTERNET
HUBS AND
CABLE wires

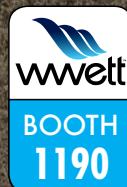


The power and control of the VAC·CON X-Cavator™ keeps municipalities up and running.

The X-Cavator™ handles your toughest and tightest excavation applications. Its powerful vacuum and high-pressure water system will excavate to the power of X to get the job done right. The X-Cavator™ enables you to locate and safely excavate around valuable utilities without damaging them. There is no application too tough for the X-Cavator™, and you can order yours with specific options to handle those special excavation jobs you are expecting. [GO ON-LINE TO LEARN MORE.](#)

[VAC·CON.COM](#)

VAC·CON IS A SUBSIDIARY OF HOLDEN INDUSTRIES, INC., A 100% EMPLOYEE-OWNED COMPANY



VAC·CON
MORE POWER TO YOU

A HOLDEN INDUSTRIES Company